

Worksheet 6-5 Answers

Listen to tetrachord ET examples on web page.

Notate both the rhythm and notes used.

NAME:

Each tetrachord type is used once.

The first pitch pitch, but not the rhythm value, of the melody is given.

DATE:

Every melody is in four four time and is four measures long.

The rhythm values used are half notes, dotted quarter notes, quarter notes and eighth notes

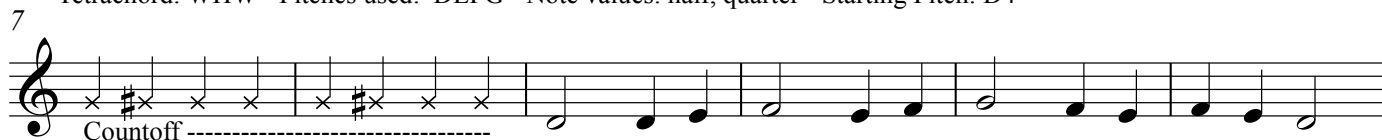
The beat unit is a quarter note.

NO RESTS!

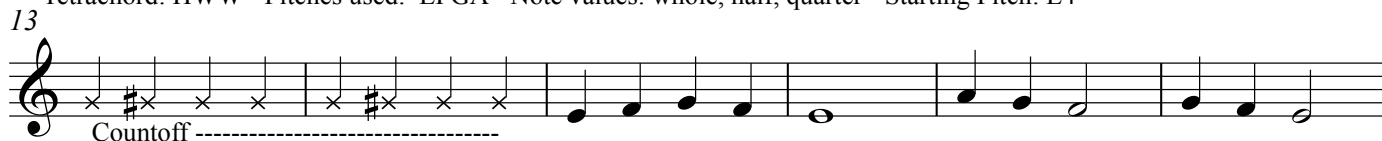
Tetrachord: WWH - Pitches used: CDEF - Note values: half, quarter - Starting Pitch: C4 (middle c)



Tetrachord: WHW - Pitches used: DEFG - Note values: half, quarter - Starting Pitch: D4



Tetrachord: HWW - Pitches used: EFGA - Note values: whole, half, quarter - Starting Pitch: E4



Tetrachord: WWW - Pitches used: FGAB - Note values: whole, half, quarter - Starting Pitch: F4

