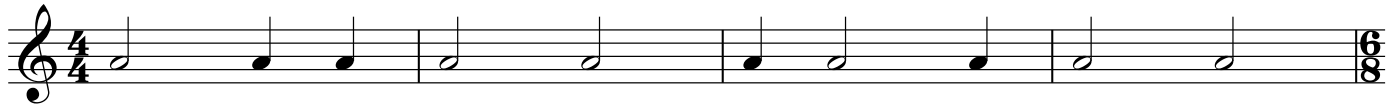


# 08 In Class - Midterm ET Sample Quiz One

Simple Quadruple Rhythm - Half - quarter - eighth



5 Compound Duple Rhythm - dotted quarter - quarter - eighth



9 Tetrachord patterns - one each WWH - WHW - HWW - WWW - H(W+H)W



14 Major / Minor Scales - one each Major, Natural Minor, Harmonic Minor, Melodic Minor

